

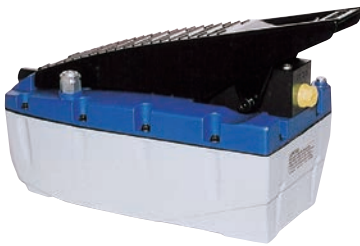
AB type Air Booster Pumps

for single-acting jacks

| | | |
|------------------|----|-----|
| Model number | AB | 2.5 |
| Air booster pump | | |
| Usable oil (ℓ) | | |

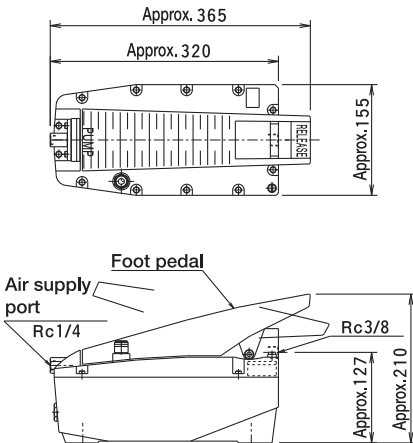
Features

- Can only be connected to air hoses.
- Output or release functions are activated simply by stepping on the pedal.
- The oil tank is made of sturdy plastic.
- Compact, lightweight, and convenient.



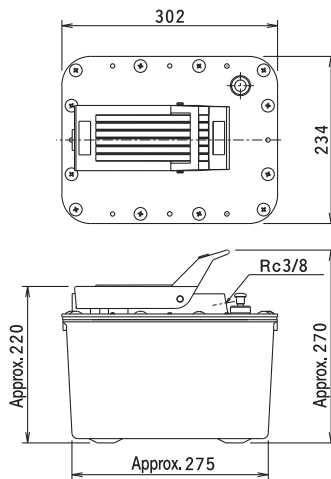
AB-2.5

Dimensional drawing

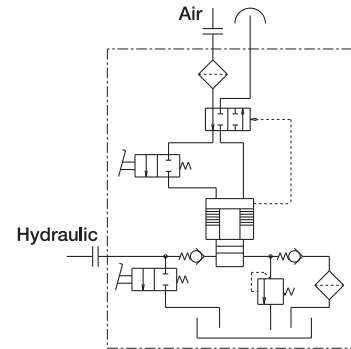


AB-7.5

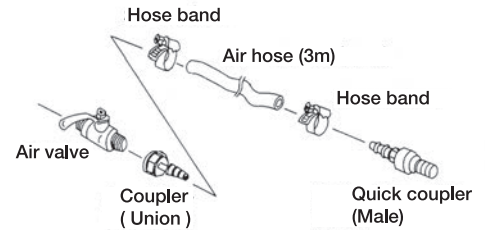
Dimensional drawing



Hydraulic circuit diagram



Component of air hoses



Note) (1) When pressing the "RELEASE" side of the pedal, the pressure releases rapidly.

There is a danger of the load falling rapidly if the "RELEASE" side of the pedal is pressed while a load is being supported.

(2) Do not loosen couplings, plugs, or hoses when the pump is pressurizing. Otherwise, falling loads, spraying oil, flying parts and other hazards may occur.

(3) Consult with us before placing the pump vertically or using the pump with a double-acting hydraulic jack.

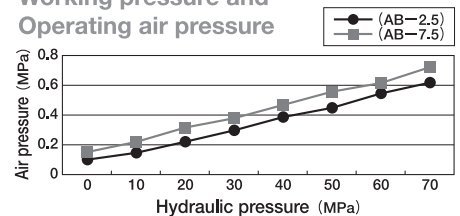
(4) Be careful about using the pump in places where ambient temperature is over 50°C or corrosive chemicals are present.

(5) Immediately after the pump is installed the circuit may contain air locks that prevent pressurization. Use your hands to press and hold the "RELEASE" side of the pedal and the "PUMP" pushbutton (under the pedal) for about 15 seconds.

Specifications

| Model | Items | Max. rated flow (MPa) | Max. Working pressure (MPa) | Output flow ml/min/70MPa | Usable oil capacity (ℓ) | Weight approx. (kg) |
|--------|-------|-----------------------|-----------------------------|--------------------------|-------------------------|---------------------|
| AB-2.5 | | max 0.8 | 70 | 150 | 2.1 | 6.8 |
| AB-7.5 | | max 1.0 | 70 | 150 | 7.2 | 13.6 |

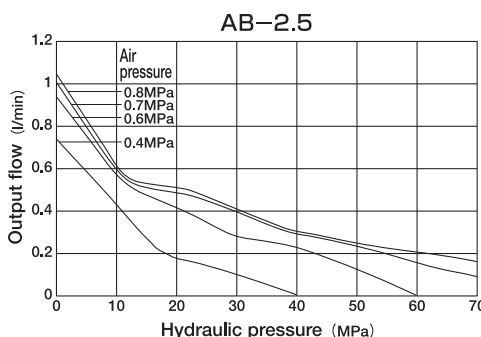
Working pressure and Operating air pressure



Performance

| Hydraulic pressure (MPa) | Min. air pressure (MPa) | |
|--------------------------|-------------------------|--------|
| | AB-2.5 | AB-7.5 |
| 0 | 0.1 | 0.15 |
| 10 | 0.15 | 0.22 |
| 20 | 0.22 | 0.32 |
| 30 | 0.3 | 0.38 |
| 40 | 0.39 | 0.47 |
| 50 | 0.45 | 0.55 |
| 60 | 0.55 | 0.62 |
| 70 | 0.62 | 0.72 |

Performance



Air consumption

