

GX-type Electric Pumps

for single-acting jacks

Application

- Ideal as a hydraulic power source when installing or working on marine engines.

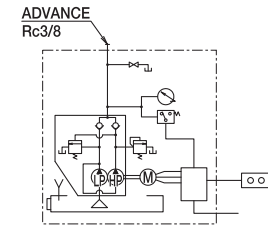
How to operate

- Close release valve, then press the 'A' button to start the motor and deliver the oil.
- When you release the 'A' button, the motor will stop. The jack will remain pressurized and stay in its current position.
- Open the release valve to allow the jack to return.

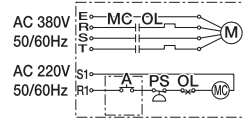


GX1

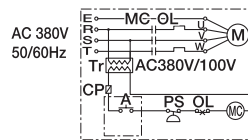
Electric circuit diagram



Electric circuit diagram

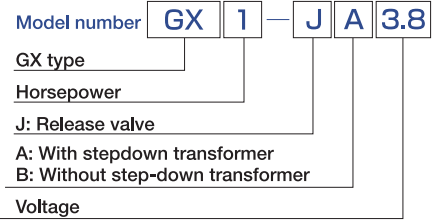


Electric circuit diagram with step-down transformer

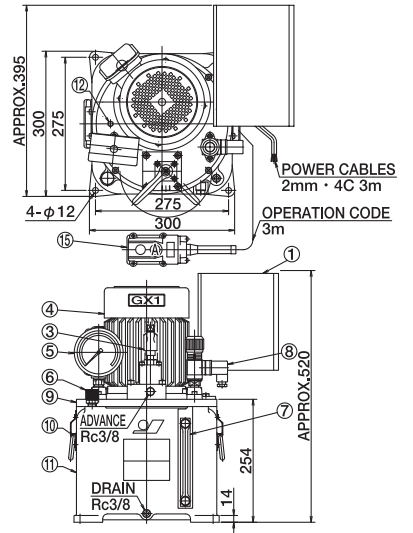


Option

- Pressure Gauge, PGO-100X1200
- Step-down transformer



Dimensional drawing



Specifications

Model	Items	Working pressure (MPa)		Oil delivery (ℓ/min)		Motor (60/50Hz)				Oil (ℓ)		Weight approx.(kg)	
		High	Low	High	Low	Capa (kW)	Insu	Pole	Rpm	Voltage	Usable		Required
GX1-J**		100	7	0.4 0.33	3.0 2.5	0.75	E	4	1700 1410	3ph. 380V	10	14	52

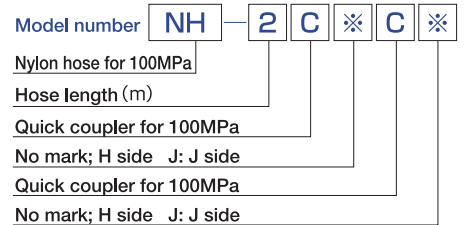
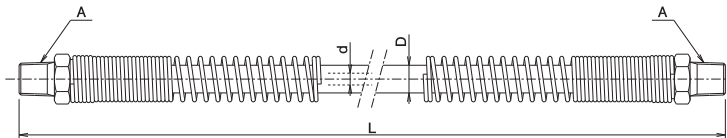
Notes.① Figures of delivery and r.p.m. of motor showing at 50Hz in right side, at 60Hz in left side. ② Voltage available on request
③ Motor is 120% load at 60Hz.

Accessories (100MPa)

Nylon hoses



Dimensional drawing



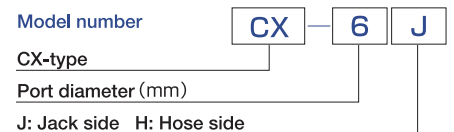
Specifications

Model	Items	Max. working pressure (MPa)	Max. oil flow (ℓ/min)	Connection Coupler	Dimension (mm)			A	Weight approx. (kg)	
					Min. bend radius	Inside diameter φ d	Outside diameter φ D		Hose (kg/m)	Metal fittings
NH5		100	8	CX-6H CX-6J	60	6.3	13.0	R3/8	0.31	0.5

Hose length

Hose model	Standard length (m)	Special order hose length (m)
Nylon hose	NH5 L 1 2 3 4 5 10	0.3~20

Quick couplers



Specifications

Model	Items	Max. working pressure (MPa)	Jack side (J)		Hose side (H)		Remarks
			Model	Connection thread	Model	Connection thread	
CX-6		100	CX-6J	R3/8	CX-6H	Rc3/8	100MPa equipment