

NEXZ type Compact Electric Pumps

for Single acting jack

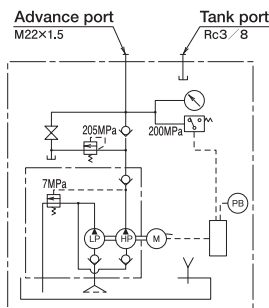
Features

- Decrease in noise by magnetic motor.
- High and Low pressure, two stage oil output.
- Portable type compact and light weight.
- Most suitable for working of shipbuilding or concrete building.

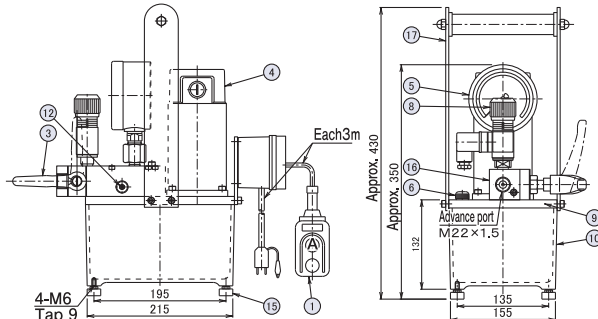


NEXZ-2MGS

Hydraulic circuit diagram



Dimensional drawing



Model number **NEXZ-2MGS**

NEXZ type pump

Usable oil volume

J: Release valve

G: With pressure gauge

S: With pressure switch

GS: With pressure gauge & pressure switch

Parts list

No.	Parts name	Q'ty	No.	Parts name	Q'ty
1	Operation switch	1	9	Plate	1
3	Release valve	1	10	Oil tank	1
4	Motor	1	12	Safety valve	1
5	Pressure gauge	1	13	Hydraulic pump	1
6	Air vent plug	1	15	Rubber feet	1
8	Pressure switch	1	16	Port Block	1

Specifications

Model	Working pressure (MPa)		Oil delivery (ℓ/min)		DC MAGNETIC MOTOR				Oil (ℓ)		Weight approx. (kg)	Connection port	
	High	Low	High	Low	VOLTAGE V	Capa(kW)	Rating rev.	Continuation uptime	Usable	Required			
NEXZ-2MGS	200	7	0.1	1.5	AC220V RECT.	0.35	2000min ⁻¹	10 minutes	2	2.5	14.5	M22x1.5	
NEXZ-4MGS									4	4.5			18
NEXZ-6MGS									6	8			26

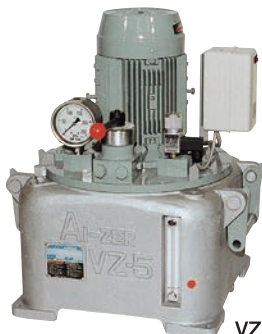
Note) This pump is for indoor use.

VZ-type Electric Pumps

for 200MPa jack

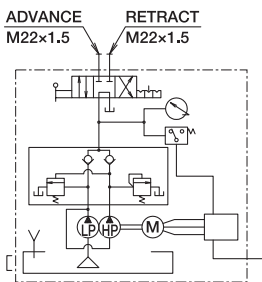
Features

- New material or industrial diamond manufacturing
- Ultra high pressure liquid forming
- Detachment of bearing, bush, propeller
- Various test system in need of extreme pressure

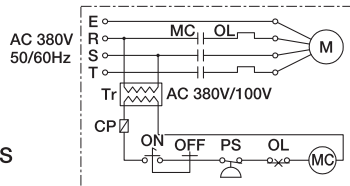


VZ5-DS

Hydraulic circuit diagram



Electric circuit diagram with down-transformer



Model number **VZ-2-DS-VZ-3.8**

VZ type

Horse power

SS: With port block & pressure switch (In case of separate control valve)

DS: With manual control valve & pressure switch

GS: With manual control valve & pressure switch (for single acting jack)

A: With down transformer

B: Without down transformer

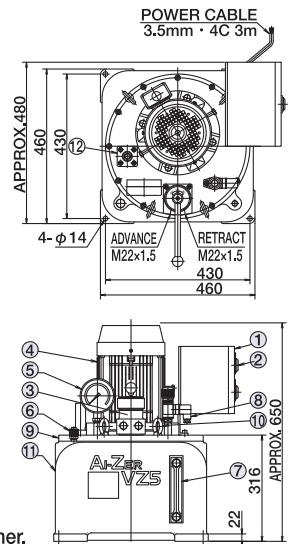
Voltage

- Directional control valve is needed.

- Directional control valve operates by manual. Switch operational lever by hand. Used for double acting jack.

- Directional control valve operates by manual. Switch operational lever by hand. Used for single acting jack.

Dimensional drawing



Parts list

No.	Parts name	Q'ty	No.	Parts name	Q'ty	No.	Parts name	Q'ty	No.	Parts name	Q'ty
1	Magnet switch	1	4	Motor	1	6	Air vent plug (Oil supply port)	1	8	Pressure switch	1
2	ON/OFF switch	1	5	Pressure gauge (Option)	1	7	Oil gauge	1	9	Plate	1
3	D type control valve	1				10	Handle	2	11	Oil tank	1

Specifications

Model	Items	Working pressure (MPa)		Oil delivery (ℓ/min)		Motor (60/50Hz)				Oil (ℓ)		Weight approx. (kg)	Connection port
		High	Low	High	Low	Capa (kW)	Insu	Pole	Rpm	Voltage	Usable		
VZ2-※	200	21	0.35/0.29	3/2.5	1.5	E	4	1800	3 ph. 380V	20	30	110	M22x1.5
VZ5-※										28	0.9/0.75		

Notes. ① Figures of delivery and r.p.m. of motor showing at 50Hz in right side, at 60Hz in left side. ② Voltage available on request
Working oil: ISO-L-HM-VG32 equivalent

Option

- Step-down transformer.