



# HYDRAULIC PUMPS

## AR Series Variable Piston Pumps Max. Pressure 16 MPa

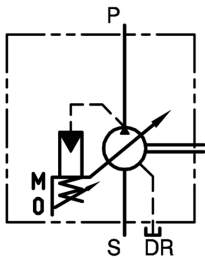


- Low noise and high efficiency.
- Options for Axial port and Side port.
- To save the piping of the tank and the space.

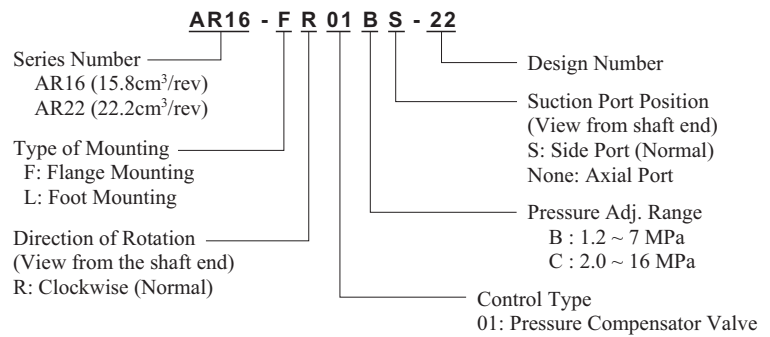
### Applications:

- NC lathes, MC machines, Pipe-bending machines, Blow moulding machines, High efficiency special machines and Small hydraulic punching machines.

### Graphic Symbol

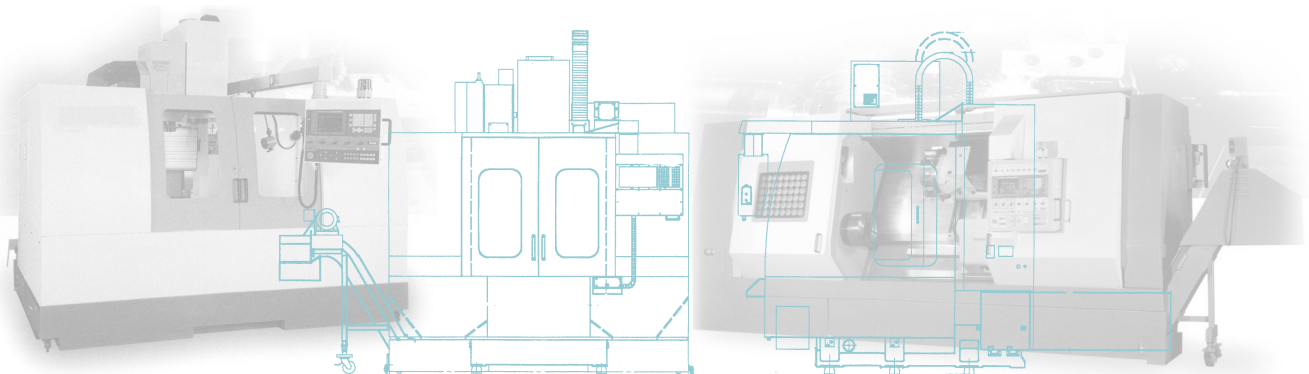


### Model Number Designation



### Specifications

Model No.	Geometric Displacement cm <sup>3</sup> /rev	Min. Adj. Pressure MPa	Max Operating Pressure MPa	Rotation Speed Range r/min		Min. Adj. Flow cm <sup>3</sup> /rev	Mass kg	
				Min.	Max.		Flange Mounting	Foot Mounting
AR*-R01*-22	AR16: 15.8	1.2	16	1800	600	AR16 : 6	12.3	14.5
AR*-R01*S-22	AR22: 22.2						13.0	15.5



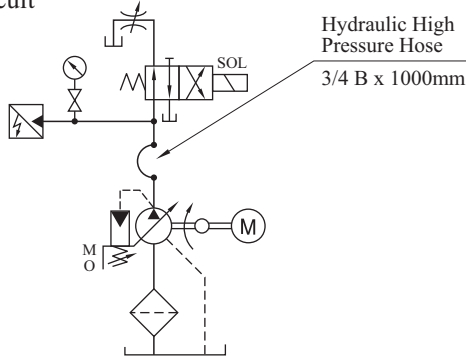
## AR Series Variable Piston Pumps Max. Pressure 16 MPa

### Response Characteristics

Response characteristics change in accordance with circuits and operating conditions. Please see below testing results.

#### Test Circuit and Conditions

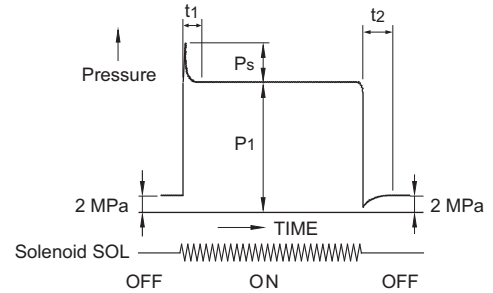
• Circuit



• Conditions

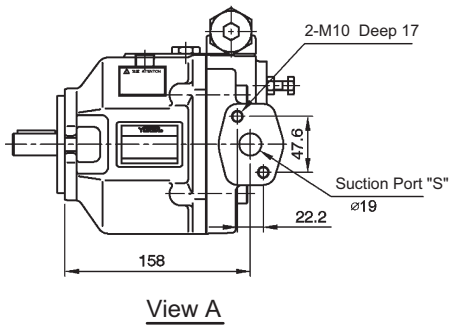
- Drive Speed: 1500 r/min
- Hydraulic Fluid: ISO VG32 oil
- Oil Temperature: 50 °C
- Viscosity: 20 mm<sup>2</sup>/s

#### Result of Measurement



Model	Full Cut-off Pressure P1 MPa	Response Time ms		Overshoot Pressure Ps MPa
		t <sub>1</sub>	t <sub>2</sub>	
AR16	16	60	65	Under 5.6
AR22		70	70	Under 7.3

#### AR※-FR01※S-22



#### AR※-FR01※-22

