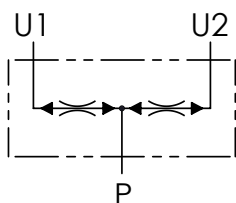


### SCHEMA IDRAULICO / HYDRAULIC CIRCUIT



### CODICE ORDINAZIONE / ORDERING CODE

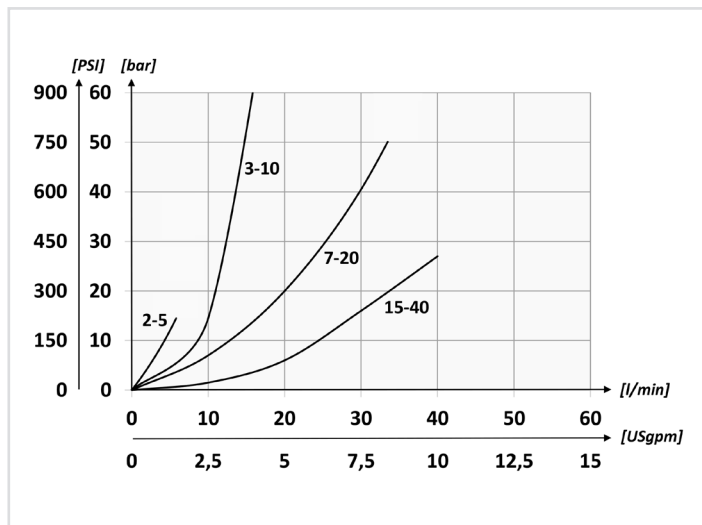
01	02	03	04
<b>DRF10</b>			

<b>01</b>	VALVOLA DIVISORE/RIUNIFICATORE DI FLUSSO (FLOW DIVIDER/COMBINER VALVES)		<b>DRF10</b>
<b>02</b>	CAMPO DI PORTATA IN INGRESSO (L/MIN) INLET FLOW RANGE (USGPM)	2-5 (0.5-1.3)	1
		3-10 (0.8-2.6)	2
		7-20 (1.8-5.2)	3
		15-40 (3.9-10.4)	4
<b>03</b>	CONNESSIONE P (PORT P)	BSPP 3/8	380
		BSPP 1/2	120
<b>04</b>	CONNESSIONE U1/U2 (PORT U1/U2)	BSPP 3/8	380
		BSPP 1/2	120

### DATI TECNICI / TECHNICAL DATA

<b>Olio idraulico</b> - Mineral oil	ISO 6743/4 (DIN 51524)		
<b>Viscosità olio</b> - Oil viscosity	15-250 mm <sup>2</sup> /s (15 to 250 cSt)		
<b>Classe di contaminazione max</b> Max contamination index	ISO 4406:1999 Classe 19/17/14		
<b>Temperatura dell'olio</b> - Oil temperature	-20°C +80°C	-4°F	+176°F
<b>Temperatura ambiente</b> - Environment temperature	-20°C +50°C	-4°F	+122°F
È indispensabile l'utilizzo di un filtro per proteggere la valvola (filtrazione consigliata 15 µm) It is necessary a filter use to protect the valve (advised filtration 15 µm)			

### PERFORMANCES



### CARATTERISTICHE TECNICHE / TECHNICAL CHARACTERISTICS

TIPO TYPE	PORTATA MAX MAX FLOW l/min-USgpm	PRESSIONE MAX MAX PRESSURE bar-PSI	PESO APPROX APPROX WEIGHT kg-lbt
DRF10	40 (10.6)	250 (3625)	0,52 (1.14)

