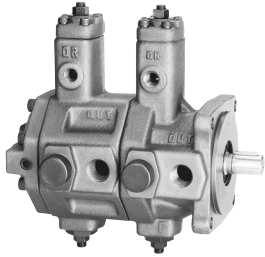




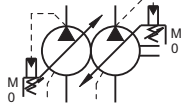
# HYDRAULIC PUMPS

## SVPDF Series Double Variable Vane Pump Max. Pressure 7 MPa



This pump is quiet, small, high efficiency, longevity, and quick response. The double variable vane pump can save the installing space, the suction port and discharge port is separate.

### Graphic Symbol

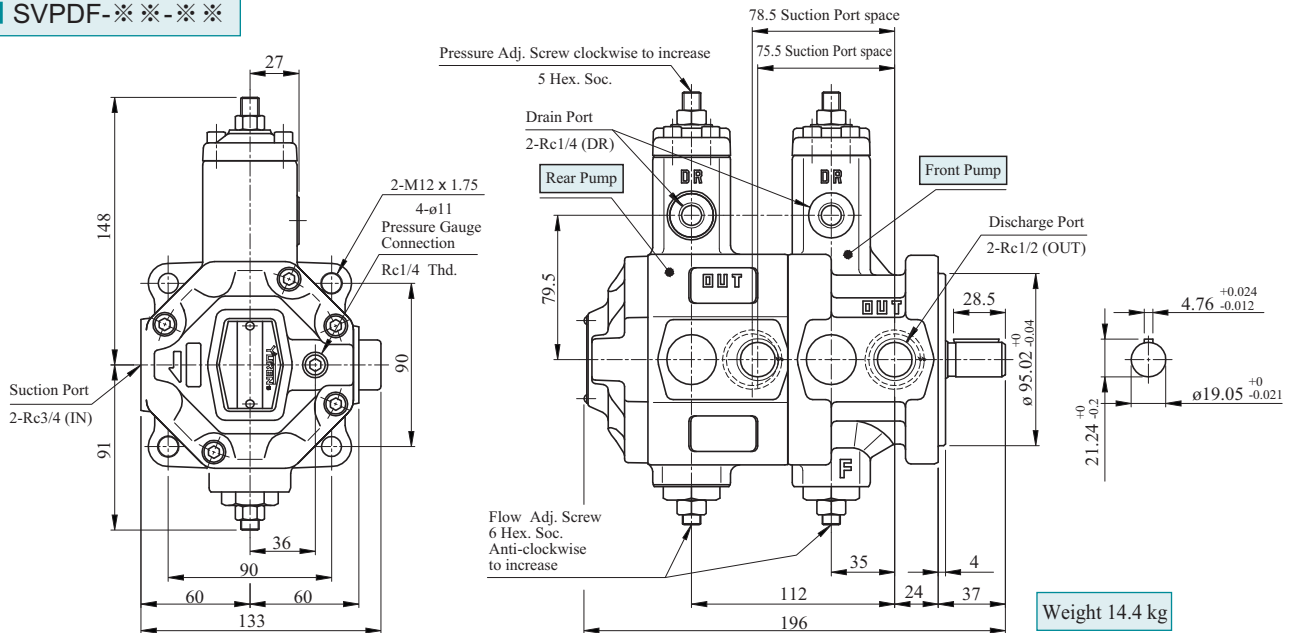


### Model Number Designation

SVPDF	-30	70	-30	70	-20
Series Number	Front Pump Geometric Displace L/min (1800 rpm)	Front Pump Max. Operating Pressure MPa (kgf/cm <sup>2</sup> )	Rear Pump Geometric Displace L/min (1800 rpm)	Rear Pump Max. Operating Pressure MPa (kgf/cm <sup>2</sup> )	Design Number
SVPDF	30	20 : 2.0 (20 kgf/cm <sup>2</sup> ) 35 : 3.5 (35 kgf/cm <sup>2</sup> ) 55 : 5.5 (55 kgf/cm <sup>2</sup> )	30	20 : 20 (20 kgf/cm <sup>2</sup> ) 35 : 35 (35 kgf/cm <sup>2</sup> ) 55 : 55 (55 kgf/cm <sup>2</sup> )	20
	40	70 : 7.0 (70 kgf/cm <sup>2</sup> )	40	70 : 70 (70 kgf/cm <sup>2</sup> )	

Please refer to page 51 for the piping of the drain port, the setting of the pressure and displacement

### SVPDF-※※-※※



### Characteristics : The following characteristics are based on fluid viscosity 46 mm<sup>2</sup>/s (ISO VG-46 40°C)

