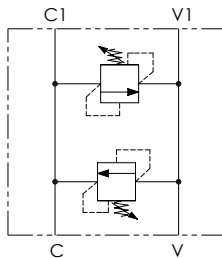
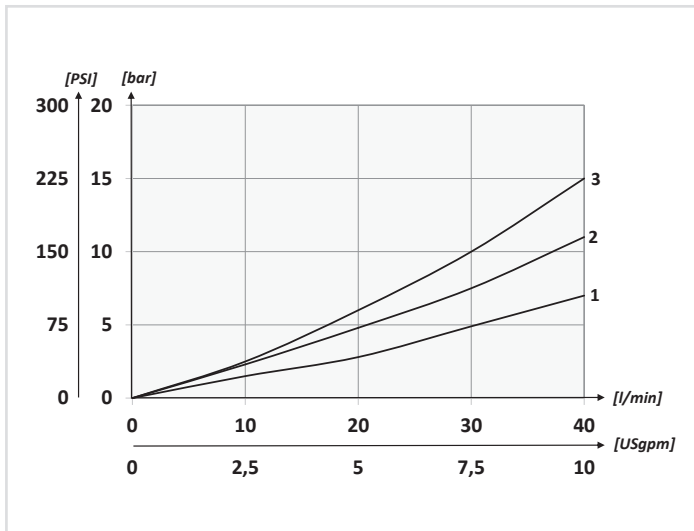


SCHEMA IDRAULICO / HYDRAULIC CIRCUIT



PERFORMANCES



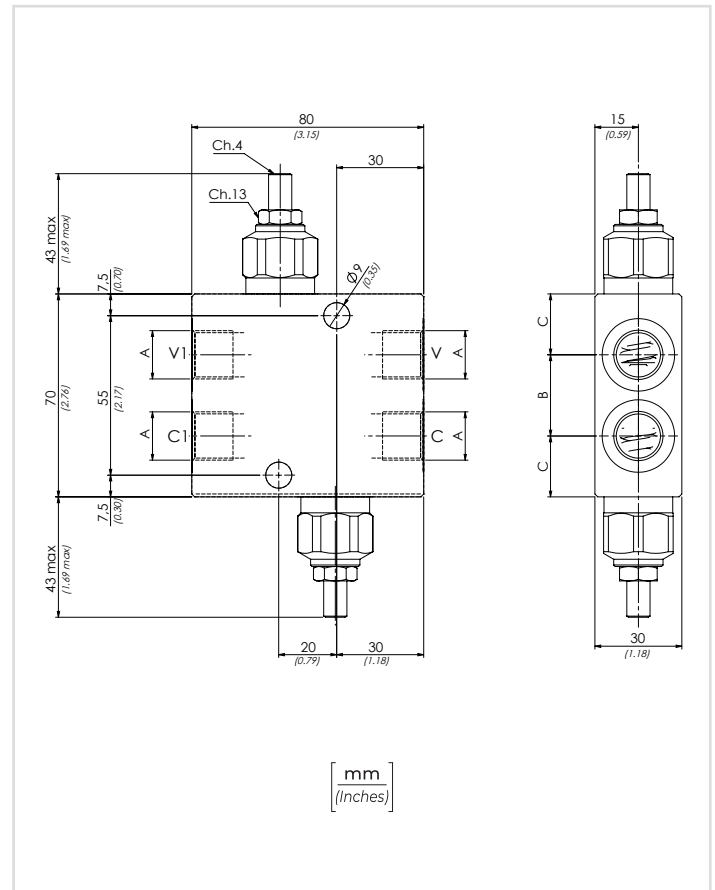
DATI TECNICI / TECHNICAL DATA

olio idraulico - Mineral oil	ISO 6743/4 (DIN 51524)
Viscosità olio - Oil viscosity	15-250 mm ² /s (15 to 250 cSt)
Classe di contaminazione max Max contamination index	ISO 4406:1999 Classe 19/17/14
Temperatura dell'olio - Oil temperature	-20°C +80°C -4°F +176°F
Temperatura ambiente - Environment temperature	-20°C +50°C -4°F +122°F
È indispensabile l'utilizzo di un filtro per proteggere la valvola (filtrazione consigliata 15 µm) It is necessary a filter use to protect the valve (advised filtration 15 µm)	

CODICE ORDINAZIONE ORDERING CODE

01	02	03
VBDC		

01	VALVOLE ANTIURTO DOPPIE INCROCIATE (DOUBLE CROSS LINE DIRECT ACTING RELIEF VALVES)	VBDC
02	DIMENSIONE (SIZE)	BSPP 3/8 380
		BSPP 1/2 120
03	MOLLA (SPRING) 10/90 bar (145/1305 PSI)	12 bar/al giro (174 PSI/turn) 1
	MOLLA (SPRING) 20/210 bar (290/3045 PSI)	33 bar/al giro (479 PSI/turn) 2
	MOLLA (SPRING) 70/350 bar (1015/5075 PSI)	70 bar/al giro (1015 PSI/turn) 3



CARATTERISTICHE TECNICHE / TECHNICAL CHARACTERISTICS

TIPO TYPE	A	PORTATA MAX FLOW l/min-USgpm	PRESSIONE MAX PRESSURE bar-PSI	B	C	PESO APPROX WEIGHT kg-lbt	VALVOLA TIPO TYPE OF VALVE
VBDC380	BSPP 3/8	40 (10.6)	350 (5075)	28 (1.10)	21 (0.83)	1,18 (2.60)	VMD40S
				33 (1.30)	18,5 (0.73)		
VBDC120	BSPP 1/2			33 (1.30)	18,5 (0.73)	1,12 (2.47)	