

AH-type Electric Pumps

for double-acting jacks



AH10-KS

Model number

AH 7.5 KS A 3.8

AH type

Horsepower

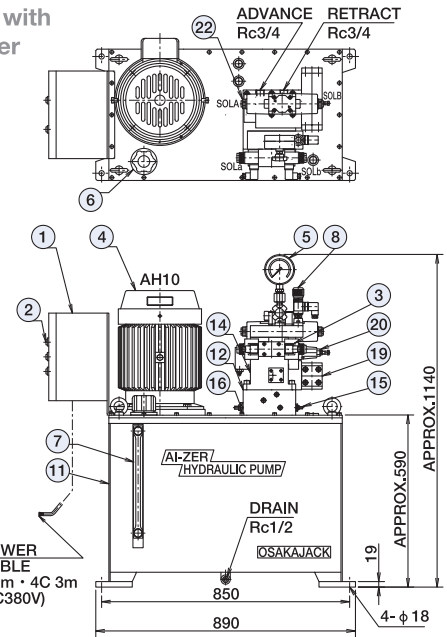
SS: With port block & pressure switch (in case of separate control valve)
 SR: With port block & relief valve (in case of separate control valve)
 DS: With manual control valve & pressure switch
 DR: With manual control valve & relief valve
 KS: With solenoid valve (KSV) & pressure switch (for high-frequency use)
 KR: With solenoid valve (KSV) & relief valve (for high-frequency use)
 LS: With solenoid valve (OSLV) & pressure switch (for extended use)
 LR: With solenoid valve (OSLV) & relief valve (for extended us)

A: With step-down transformer

B: Without step-down transformer

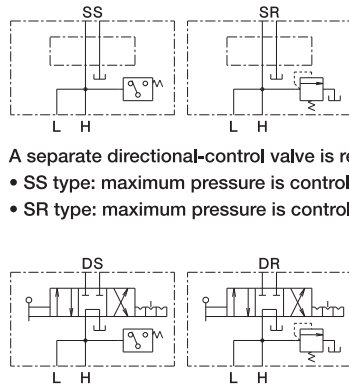
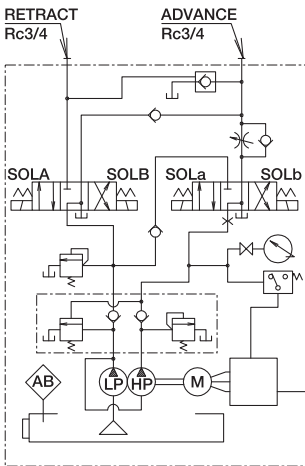
Voltage

Dimensional drawing with step-down transformer



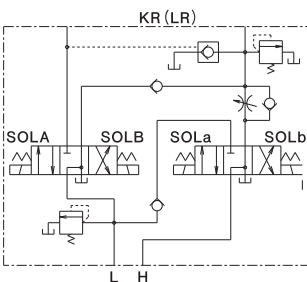
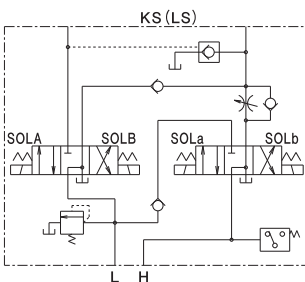
Notes: ① Motor and hydraulic circuit are determined after consultation.
 ② Circuit operation requires a separate power source unless a step-down transformer is installed.

Hydraulic circuit diagram



A separate directional-control valve is required.
 • SS type: maximum pressure is controlled by a pressure switch.
 • SR type: maximum pressure is controlled by a relief valve.

Directional control valve is manually operated by a hand lever.
 • DS type: Maximum pressure is controlled by a pressure switch.
 • DR type: Maximum pressure is controlled by a relief valve.



Directional control valve is an electromagnetically switched type. Electrical signals control the switching.

- KR & LR types: Excitation time is within 1 minute. Useful for high-frequency applications. Maximum pressure is controlled by a relief valve.
- KS & LS types: Excitation time is 30 minutes. Useful for applications with a frequency of 15 times/min or less. Maximum pressure is controlled by a pressure switch.

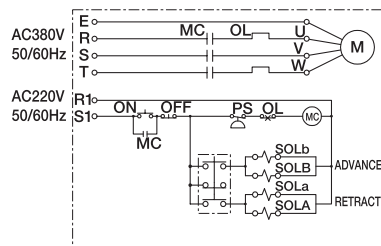
Parts list

No.	Parts name	Q'ty	No.	Parts name	Q'ty
1	Magnet switch	1	11	Oil tank	1
2	ON/OFF switch	1	12	Valve block	1
3	Solenoid valve	1	14	Valve stand	1
4	Motor	1	15	Unload valve	1
5	Pressure gauge	1	16	Safety valve	1
6	Air vent plug (Oil supply port)	1	19	Pilot check valve	1
7	Oil gauge	1	20	Relief modular valve	1
8	Pressure switch	1	22	Solenoid valve	1
			25	Operation switch	1

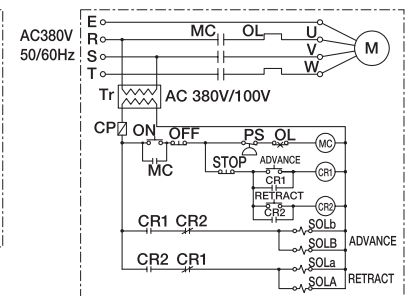
Options

- Step-down transformer

Electric circuit diagram



Electric circuit diagram with step-down transformer



Specifications

Model	Items		Working pressure (MPa)		Oil delivery (ℓ/min)		Motor (60/50Hz)				Oil (ℓ)		Weight approx. (kg)	Connection port
	High	Low	High	Low	Capa (kW)	Insu	Pole	rpm	Voltage	Usable	Required			
AH7.5-DS	72	7	4.5	3.7	5.5	B	4	1800	3 ph.	380V	70	115	430	Rc3/4
AH7.5-KS														
AH7.5-LS														
AH10-DS														
AH10-KS														
AH10-LS	6	5	48	40	7.5					100	150	480	490	500

Notes: ① Figures of oil delivery and r.p.m. of motor showing at 50Hz right side, at 60Hz in left side. ② working oil: ISO-L-HM-VG32 or equipment.
 ③ Motor is 120% load at 60Hz.