

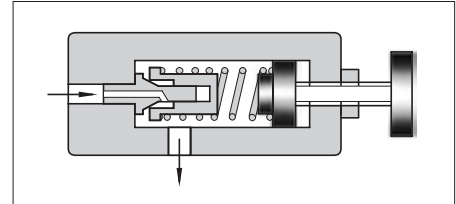
## Direct Type Relief Valves

This valve is used in a hydraulic circuit to prevent damage due to over pressure and to adjust the maximum circuit pressure of small capacity.

### Specifications

| Model Numbers       |                    | Max. Operating Pressure<br>MPa (PSI) | Pres. Adj. Range<br>MPa (PSI) | Max. Flow<br>L/min<br>(U.S.GPM) | Approx. Mass<br>kg (lbs.) |           |
|---------------------|--------------------|--------------------------------------|-------------------------------|---------------------------------|---------------------------|-----------|
| Threaded Connection | Sub-plate Mounting |                                      |                               |                                 | DT type                   | DG type   |
| DT-02-*-22*         | DG-02-*-22*        | 21 (3050)                            | Note)                         | 16<br>(4.23)                    | 1.5 (3.3)                 | 1.5 (3.3) |

Note: Refer to the Model Number Designation.



### Model Number Designation

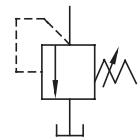
| F-  | D                                      | T                             | -02        | -B                            | -22           | *   |
|---|--|-------------------------------|------------|-------------------------------|---------------|---|
| Special Seals   | Series Number                          | Type of Mounting              | Valve Size | Pres. Adj. Range<br>MPa (PSI) | Design Number | Design Standards  |
| <b>F:</b><br>Special Seals for Phosphate Ester Type Fluids (Omit if not required) | <b>D:</b><br>Direct Type Relief Valves | <b>T:</b> Threaded Connection | <b>02</b>  | <b>B:</b> ★-7 (★-1020)        | <b>22</b>     | <b>None:</b> Japanese Std. "JIS"<br><b>80:</b> European Design Std.<br><b>90:</b> N. American Design Std. |
|   |  | <b>G:</b> Sub-plate Mounting  |            | <b>C:</b> 3.5-14 (510-2030)   | <b>22</b>     |   |
|   |  |                               |            | <b>H:</b> 7-21 (1020-3050)    |               |   |

★ Refer to the Minimum Adjustment Pressure Characteristics.

### Instructions

- To adjust the pressure, loosen the lock nut and turn the handle slowly clockwise for higher pressures or anti-clockwise for lower pressures. After adjustments, do not forget to tighten the lock nut.
- Piping of the tank line should not be connected to any tank line of the other valves, but connected directly to the reservoir.

### Graphic Symbol



### Attachment

#### ● Mounting bolts

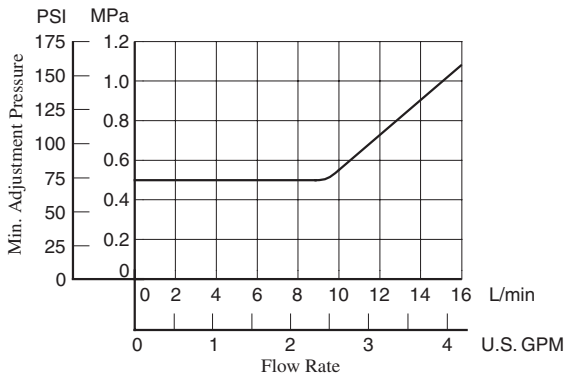
| Valve Model Numbers | Socket Head Cap Screw                        |                          | Qty. |
|---------------------|--|--------------------------|------|
|                     | Japanese Std. "JIS" and European Design Std. | N. American Design Std.  |      |
| DG-02               | M5 × 45 Lg.                                  | No.10-24 UNC × 1-3/4 Lg. | 4    |

### Sub-plate

| Valve Model Numbers | Japanese Standard "JIS" |             | European Design Standard |             | N. American Design Standard |             | Approx. Mass<br>kg (lbs.) |
|---------------------|-------------------------|-------------|--------------------------|-------------|-----------------------------|-------------|---------------------------|
|                     | Sub-plate Model Numbers | Thread Size | Sub-plate Model Numbers  | Thread Size | Sub-plate Model Numbers     | Thread Size |                           |
| DG-02               | DGM-02-20               | Rc 1/4      | DGM-02-2080              | 1/4 BSP.F   | DGM-02-2090                 | 1/4 NPT     | 0.7 (1.5)                 |

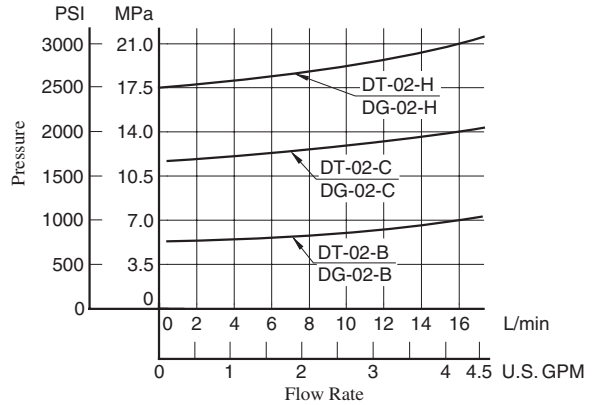
- Sub-plates are available. Specify the sub-plate model number from the table above. When sub-plates are not used, the mounting surface should have a good machined finish.
- The sub-plates are those for remote control relief valves. For dimensions, see [page 204](#).

## Min. Adjustment Pressure

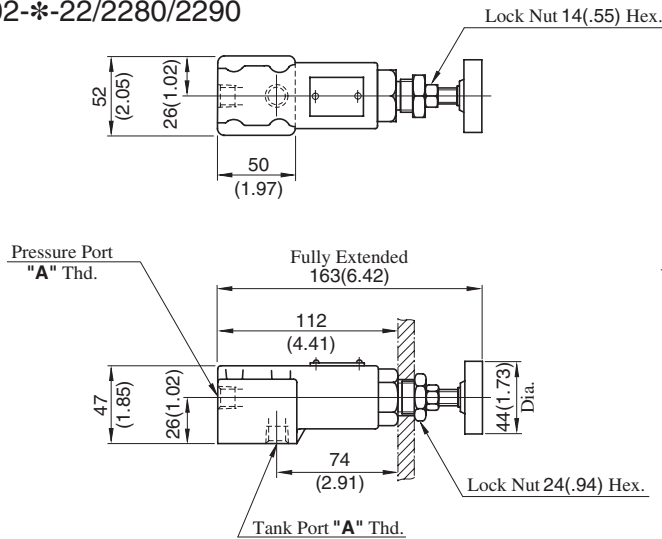


## Nominal Override Characteristics

Hydraulic fluid  
 Viscosity : 35 mm<sup>2</sup>/s (164 SSU)  
 Specific Gravity : 0.850

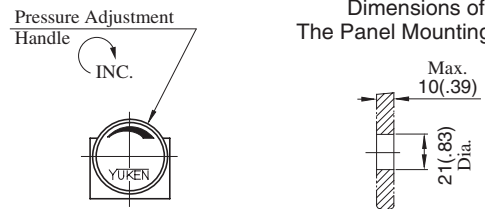


### DT-02-\*-22/2280/2290



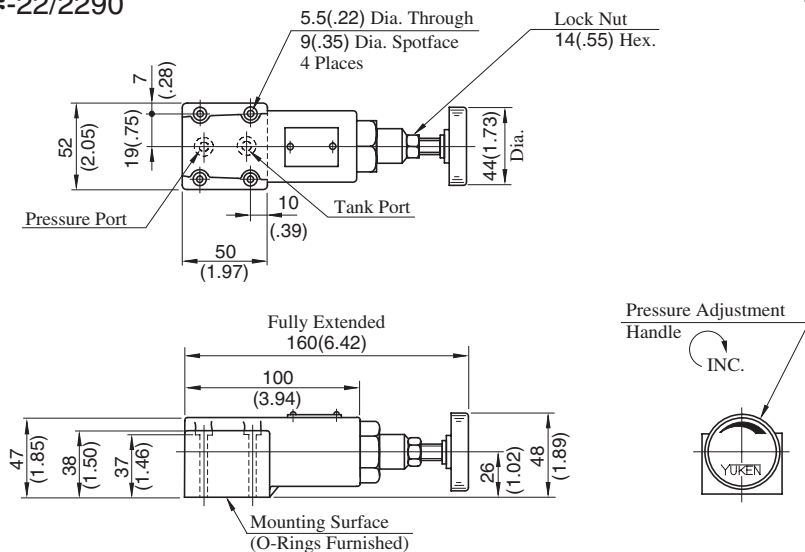
| Model Numbers | "A" Thd.  |
|---------------|-----------|
| DT-02-*-22    | Rc 1/4    |
| DT-02-*-2280  | 1/4 BSP.F |
| DT-02-*-2290  | 1/4 NPT   |

#### Dimensions of The Panel Mounting Hole



DIMENSIONS IN MILLIMETRES (INCHES)

### DG-02-\*-22/2290

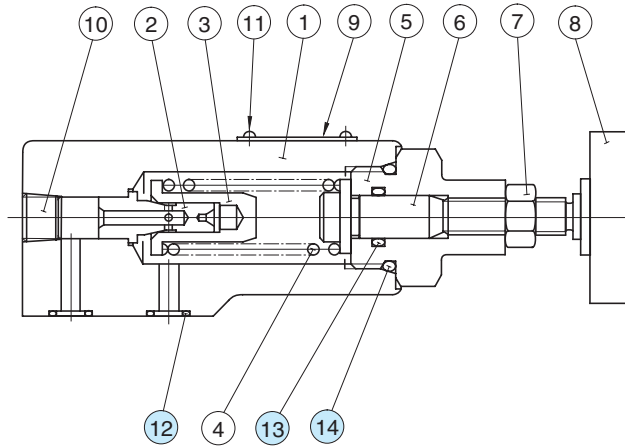


Note: For dimensions of the valve mounting surface, see the dimensional drawing (page 204) of the sub-plate used together.

■ Spare Parts List

DT-02-\*-22/2280/2290

DG-02-\*-22/2290



● List of Seals

| Item | Name of Parts | Part Numbers | Qty. | Remarks            |
|------|---------------|--------------|------|--------------------|
| 12   | O-Ring        | SO-NB-P9     | 2    | Use only for DG-02 |
| 13   | O-Ring        | SO-NA-P12    | 1    | ———                |
| 14   | O-Ring        | SO-NB-P22.4  | 1    | ———                |

Note: When ordering the seals, please specify the seal kit number from the table below.

● List of Seal Kits

| Valve Model Numbers | Seal Kit Numbers |
|---------------------|------------------|
| DT-02               | KS-DT-01-22      |
| DG-02               | KS-DG-02-22      |